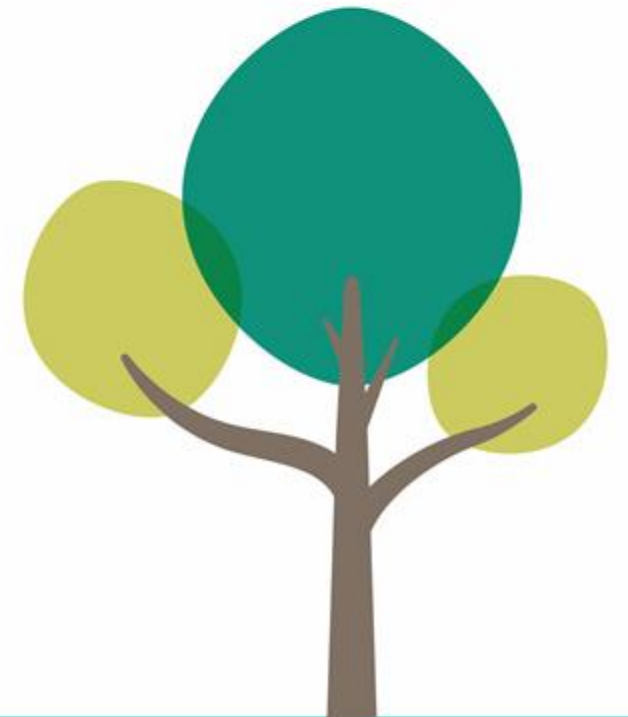


SANDWELL CHILDREN'S SERVICES – Reset and Recovery update

Overview:

- All services very busy since the start of term
- Some staff volunteering to assist other response functions
- Levels of absence low
- Staff who are self-isolating generally continuing to work
- 'Business As Usual' on track
- Levels of scrutiny and contact from DfE and Ofsted continues
- Ofsted visits to schools
- Ofsted assurance visit re: children's services 'paused'
- Referrals starting to increase
- SEND assessment delays



SANDWELL CHILDREN'S SERVICES – Reset and Recovery update

Impact:

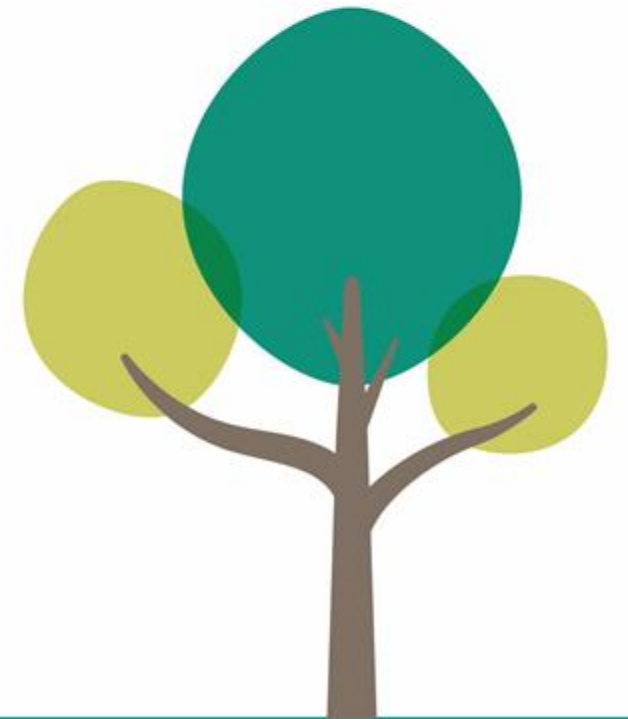
- Disrupted formal education
- Home learning in strained environments
- Exams and qualifications
- Jobs and training shortages
- Lack of safe space and trusted support
- Loneliness and isolation – fears about the future
- Online pressure and risk
- Risk of harmful behaviours
- Disrupted family services and psychological support
- Challenging family relationships
- Increase in domestic abuse
- Low personal risk of direct Covid but high long-term social and economic exposure
- Increase in FSM of 17.5% and rising (now 29% of pupils)



SANDWELL CHILDREN'S SERVICES – Reset and Recovery update

SCHOOLS and EARLY YEARS:

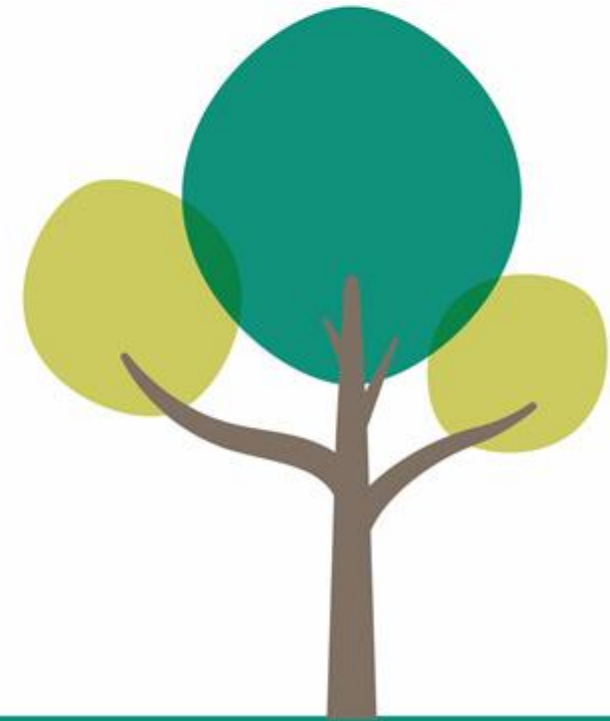
- Excellent engagement from schools, academies and early years providers with the local authority – good feedback
- Generally all schools open (a few short-term closures)
- Most schools have experienced need for pupils and staff to self-isolate – support line and Incident Management Team meetings
- Remote learning, catch up activities and tutoring
- Staff wellbeing
- Attendance has been good
- EHE requests increased
- Pupil assessment, testing and examinations 2020/2021
- Additional costs for schools



SANDWELL CHILDREN'S SERVICES – Reset and Recovery update

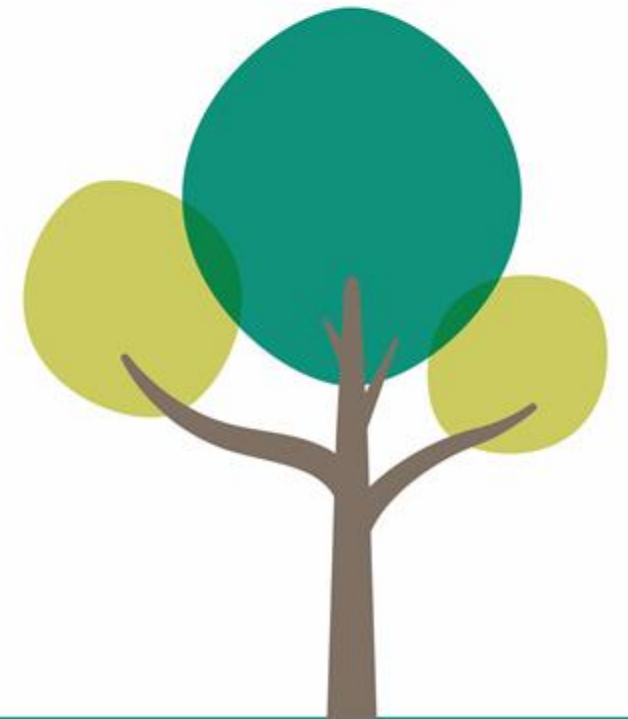
VULNERABLE CHILDREN:

- Vulnerable Children Group meeting
- Clinically Extremely Vulnerable children
- Detached Youth Work
- Laptops and dongles
- Data returns and report from Waves 1-13
- Surge planning
- Strategic Commissioning
- Corporate Parenting
- Winter Grant arrangements and free school meals during school holidays



SANDWELL CHILDREN'S SERVICES – Reset and Recovery update: Brexit planning

- School admissions
- QTS status
- Food suppliers
- Medicines for children
- Planning school trips to the EU
- Data protection
- Employing staff from the EU
- Families in EU Settlement scheme
- Children in care and care leavers' status
- Cross-border child protection arrangements
- SMBC Brexit Working Group and risk register



SANDWELL CHILDREN'S SERVICES – Reset and Recovery update

COMMUNICATION AND INFORMATION

- Sitrep (including Sandwell Children's Trust), Reset and Recovery Board, Vulnerable People Cell meetings
- With partners (education providers, safeguarding partnership)
- Several times weekly with DfE and Ofsted
- Regional and national meetings and actions
- Voices of children, young people and families
- Staff meetings and other support, including staff conferences

